

Malone Road Accessible Trail Narrative

This project will result in improvement in trail surfaces, removal of obstacles, and installation of resting points in sections of the Malone Conservation Area trail network making them easily accessible to mobility-impaired persons (both physically or mentally impaired), the elderly, and families, particularly those with small children. Design guidance will be taken from FSTAG, the Architectural Barriers Act and the Americans with Disabilities Act.

The elderly and mobility-impaired are underserved by Hubbardston's outdoor spaces. They cannot currently negotiate trails, even with mechanical assistance, due to uneven footing containing rocks and roots, excessive slopes, narrow passages, and seasonally impassable sections.

To some extent, families with children face some of the same restrictions as strollers cannot easily navigate the trails. Additionally, many families need grandparents to assist with childcare, and these care providers may be unable to use an outdoor space like Malone Conservation Area to provide needed recreation.

This project would provide these affected populations, as well as all residents in general, with sustainable access to the open spaces at Malone Conservation Area into the future. The proposed trails provide solid footing, wider passages, gentle slope, and elimination of obstacles for exercise in an outdoor setting. It will have a long-term impact on the community, supporting a salient community need with benefits far greater than the expense. In collaboration with the Hubbardston Council on Aging, this project could also include the acquisition of a "lending library" of mobility devices such as seated canes and rollators for use on the trail.

"There is almost no difference between a trail that is designed to maximize access to persons with disabilities and one that is well-designed to fit the environment and sustainable for years to come."

-Mark Passo

Executive Director, American Trails



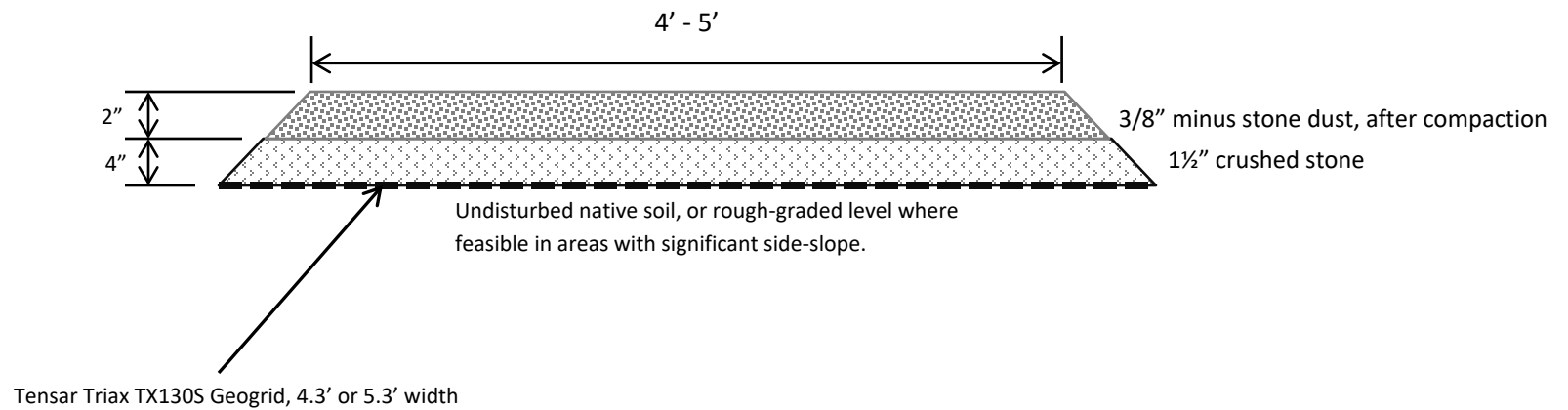
Existing trail surface

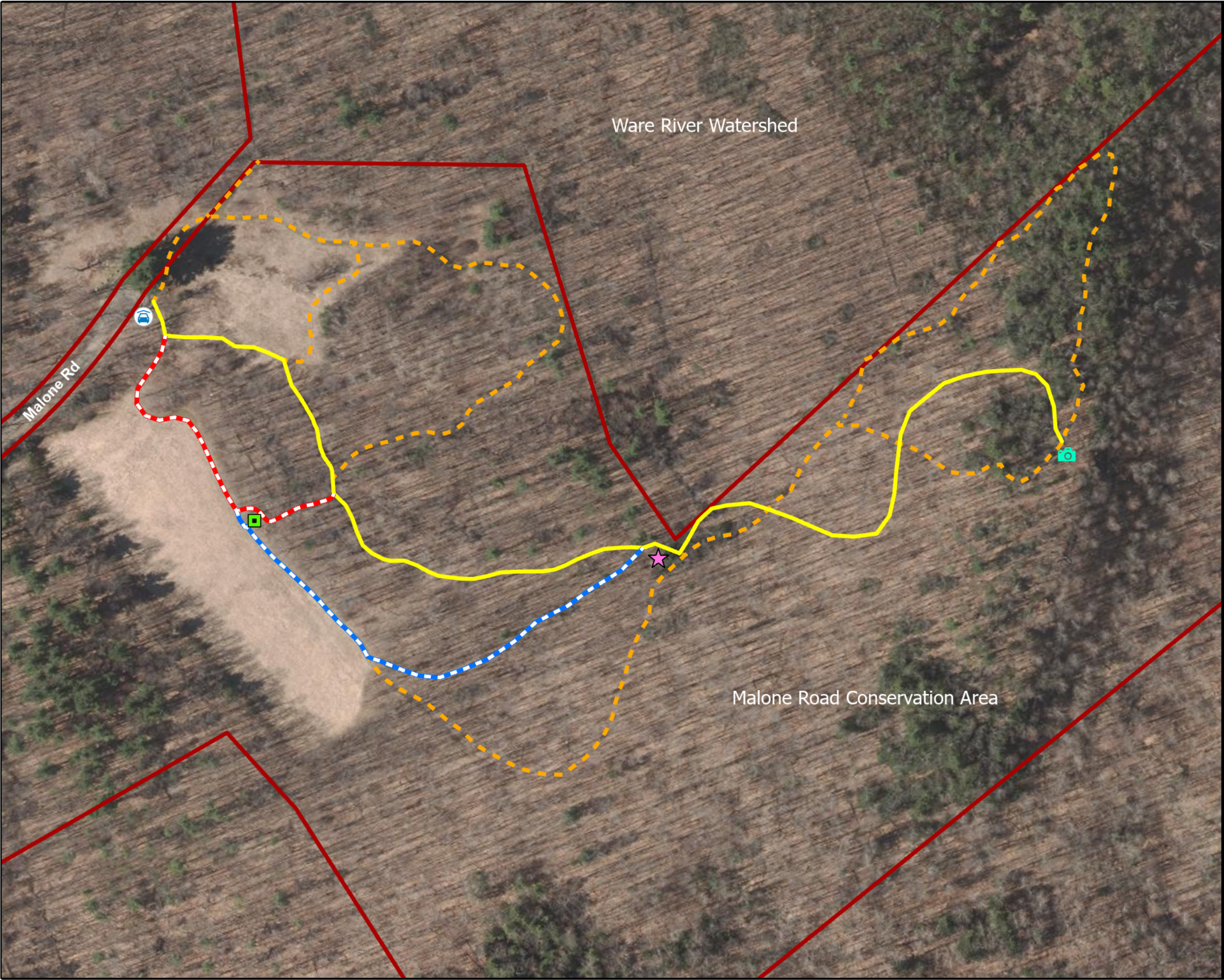


Proposed trail surface photosimulation

Hardened Trail Detail

N.T.S.





Proposed Accessible Trail Map
Malone Road Conservation Area

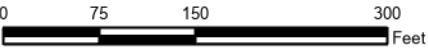


Legend

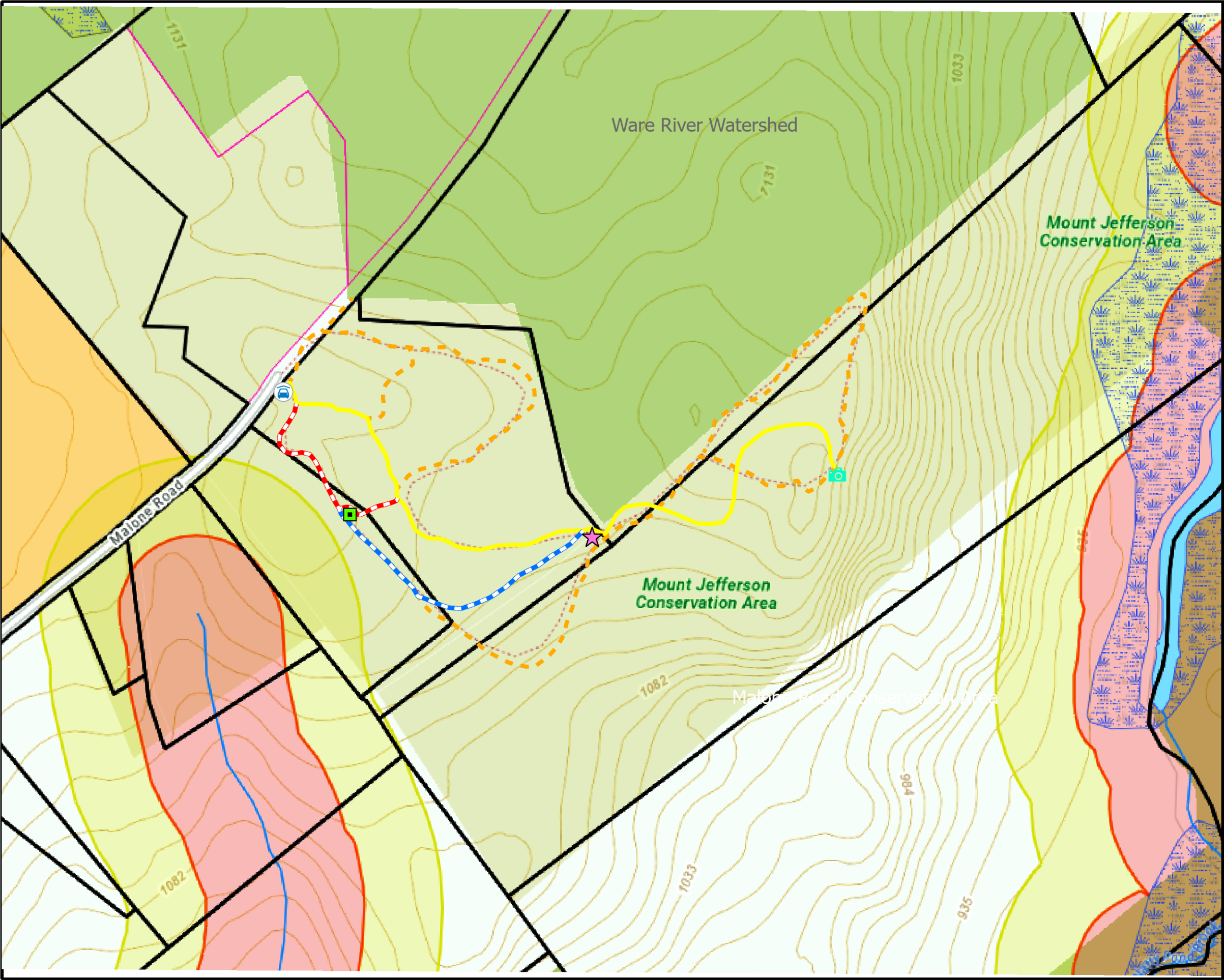
- Conservation Area boundary
- Existing natural surface trails
- Dottie Rock accessible trail 1,950 ft.
- Option A accessible trail 550 ft.
- Option B accessible trail 800 ft.

Amenities

- Bench
- Parking
- Picnic table
- Scenic view



Data Sources:
Malone Road Conservation Area Boundary shapefile
MassGIS USGS Color Ortho Imagery (2021)
GPS Field Data



Proposed Accessible Trail Map
Watershed Protection Zones

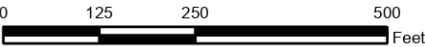


Legend

- Existing natural surface trails
- Dottie Rock accessible trail 1,950 ft.
- Option A accessible trail 550 ft.
- Option B accessible trail 800 ft.

Amenities

- Bench
- Parking
- Picnic table
- Scenic view



Data Sources:
Malone Road Conservation Area Boundary shapefile
MassGIS USGS Color Ortho Imagery (2021)
GPS Field Data

Dottie Rock vista & Malone Rd Conservation Area



Dottie Rock Scenic Overlook



Existing conditions



Observation Deck photosimulation